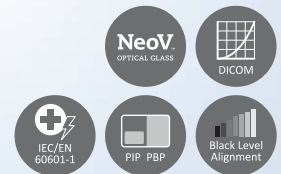


MX-Series LCD Monitor 24"

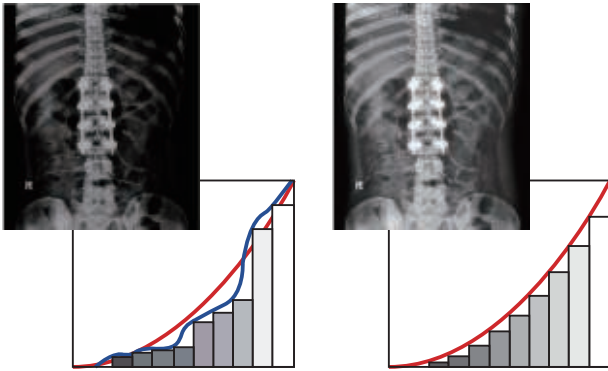


Professional Clinical Review Displays of High Performance, Easy Maintenance



The MX-Series displays are designed for durability and easy cleaning. It features Full HD resolution, it features Full HD resolution, medical grade (60601-1 certified) power supply and DICOM Part 14 specification compliance, and provides excellent image quality, colour reproduction and image contrast. The MX-Series is specifically designed for 24/7 operation in demanding medical settings.





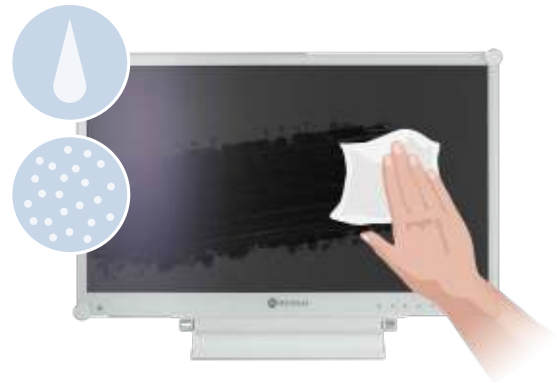
DICOM Mode

Consistent Image Clarity

The MX-Series is compliant with the DICOM Part 14 standard specifications. This calibration function corrects gamma and luminance to achieve the smooth grayscale that is required for the accurate and consistent appearance of clinical data and other review images.

Easy to Clean and Reliable Design

The anti-acid and anti-alkali coating treatment of the NeoV™ Optical Glass help the MX-Series withstand alcohol and other commonly used cleaning solutions. With the displays also bolstered by metal casing, this proprietary glass technology shields them from scratches and other damage.



Versatility and Multitasking

Multiple signal source options, including HDMI and DisplayPort 1.2, offer the versatility for the MX-Series to integrate with other instruments. Its broad connectivity enables the PiP/PbP capability that makes multitasking possible—studying different images or matching medical records—in a single display.

Medical-Grade Certified Power Supply

The MX-Series adopts a specially designed low-voltage medical-grade power supply to ensure safety, performance, and reliability in any professional medical environment. Compliance with the IEC/EN60601-1 standards ensures their safe and reliable performance in demanding medical settings.



IEC/EN 60601-1
Medical-Grade Power Supply

Features

- Full HD 1920 x 1080 resolution
- Anti-Burn-in™ technology prevents image ghosting
- NeoV™ Optical Glass and metal housing for excellent cleanability and protection
- Crisp 20,000,000:1 dynamic contrast ratio
- Compliance with DICOM Part 14 with calibrated greyscale and brightness
- Medical adapter certified to the IEC/EN 60601-1 medical design
- Equipotential terminal connector
- White exterior design for easy contaminant detection
- PiP/PbP functions enable multi-source viewing simultaneously
- Image Enhancer: 3D Deinterlace / Noise Reduction
- Versatile connectivity: DisplayPort, HDMI, DVI, VGA
- EcoSmart Sensor automatically adjusts brightness level according to ambient lighting conditions
- Flicker-free display technology reduces eye discomfort
- Black-level adjustment for presenting more details in dark images
- VESA mounting for flexible installation in healthcare settings

Specifications

MX-24

Panel

Panel Type LED-Backlit TFT LCD (VA Technology)

Panel Size 23.8"

Max. Resolution FHD 1920 x 1080

Pixel Pitch 0.274 mm

Brightness 300 cd/m²

250 cd/m² (DICOM Preset)

Contrast Ratio -

Viewing Angle (H/V) 178°/178°

Display Colour 16.7M

Response Time 5 ms

Frequency

Frequency (H) 24 kHz-83 kHz

Frequency (V) 50 Hz-75 Hz

Signal Input

DisplayPort x 1

HDMI 1.4 x 1

DVI 24-Pin DVI-D

VGA 15-Pin D-Sub x 1

Audio

Audio In -

Internal Speakers 2W x 2

Power

Power Supply External

Power Requirements DC 12V, 2.5A

On Mode 18W (On)

Stand-by Mode < 0.5W

Off Mode < 0.3W

Glass

Thickness 3.0 mm (0.12")

Reflection Rate < 1%

Transmission Rate > 97%

Hardness > 9H

Operating Conditions

Temperature 0°C-40°C (32°F-104°F)

Humidity 10%-90% (non-condensing)

Storage Conditions

Temperature -20°C-60°C (-4°F-140°F)

Humidity 5%-95% (non-condensing)

Mounting

VESA FPM PMI Yes (100 x 100 mm & 75 x 75 mm)

Stand

Tilt 3° to 21°

Security

Kensington Security Slot Yes

Dimensions

Product with Base (W x H x D) 562.4 x 392.8 x 196.0 mm (22.1" x 15.4" x 7.7")

Product w/o Base (W x H x D) 562.4 x 352.6 x 56.2 mm (22.1" x 13.9" x 2.2")

Packaging (W x H x D) 672.0 x 517.0 x 249.0 mm (26.5" x 20.4" x 9.8")

Weight

Product w/o Base 7.0 kg (15.4 lb)

Product with Base 7.8 kg (17.2 lb)

Packaging 10.9 kg (24.0 lb)

Regulation Approval

Certifications & Compliance CE, LVD, RoHS, WEEE, REACH, EAC

Power Adaptor Certifications ADAPTER/ATM065T-P120: CE, FCC, PSE, WEEE, BSMI, Medical Grade

Accessories

Supplied Power Adaptor, Power Cord, VGA Cable, Audio Cable, Quick Start Guide, Warranty Card

Optional Accessories

Ceiling Mount (Landscape only) CMP-01+WMK-03

Wall Mount (Landscape only) WMA-01, WMK-01, WMK-03, PMK-01

Desk mount (Landscape only) DMC-01, DMC-02D, DMS-01D, DMS-01Q, ES-02

Handle HDL-02

All specifications are subject to change without prior notice.

Copyright © 2022 AG Neovo. All rights reserved. The name AG Neovo is a trademark of AIC.

All other trademarks are the property of their respective owners.

P/C: MX24B0 Version 1.2, 20220628



Global Headquarters

Taipei, Taiwan

EMEA Regional Headquarters

Capelle a/d IJssel, The Netherlands

North & South America Regional Headquarters

San Jose, CA, U.S.A.

Asia-Pacific Regional Headquarters

Taipei, Taiwan

Canada Sales Office

Vancouver, B.C., Canada

China Sales Office

Shanghai, China

Czech Republic Sales Office

Brno, Czech Republic

Denmark Sales Office

Støvring, Denmark

Germany Sales Office

Mechernich, Germany

Italy Sales Office

Livorno, Italy

Poland Sales Office

Warsaw, Poland

Spain Sales Office

Barcelona, Spain

Ukraine Sales Office

Lviv, Ukraine

www.agneovo.com